

# Phillips Hue Plugin for Q-SYS - Quick Setup Guide

## Introduction

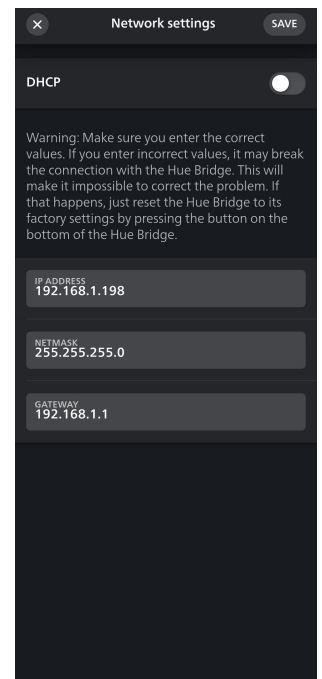
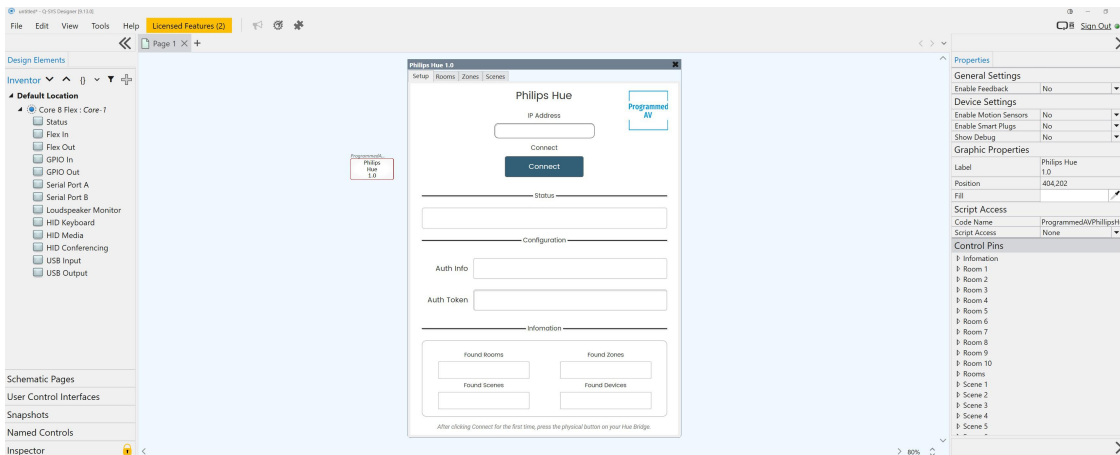
This guide will help you set up and use the Phillips Hue Plugin for Q-SYS to control your Hue lighting system.

## Prerequisites

- Q-SYS Designer v9.10.2 or higher
- Phillips Hue Bridge reachable from Q-SYS Core networks
- Bridge IP address
- Hue ecosystem devices(lights, rooms, zones, scenes) already configured through the Phillips Hue app

## Installation

1. Drag the Phillips Hue Plugin from the Plugins section of the Schematic Library into your design
2. In the Phillips hue app, retrieve the devices IP address. It is also recommended to set the bridge to a static IP address. Hue App > Settings > Bridges > Bridge name > Network settings > Set to static.



# Initial Setup

## Connecting to the Hue Bridge

1. Navigate to the Setup page of the plugin
2. Enter the IP address of your Hue Bridge in the IP Address field
3. Click the Connect button

## Authentication

1. When prompted, press the physical link button on top of your Hue Bridge within 30 seconds
2. Once authenticated, the status will change to "Connected and authenticated"
3. The plugin will automatically discover all available rooms, zones, and scenes.

# Using the Plugin

## Controlling Rooms

1. Navigate to the Rooms page
2. Select a room from one of the dropdown menu control sets
3. Use the controls to:
  - Toggle lights on/off
  - Adjust brightness with the slider
  - Select colors from the dropdown menu

## Controlling Zones

1. Navigate to the Zones page
2. Select a zone from one of the dropdown menu control sets
3. Use the controls to:
  - Toggle lights on/off
  - Adjust brightness with the slider
  - Select colors from the dropdown menu

# Activating Scenes

1. Navigate to the Scenes page
2. Select a room or zone from the left dropdown
3. Select a pre-configured scene from the middle dropdown
4. Click the Activate button to trigger the scene

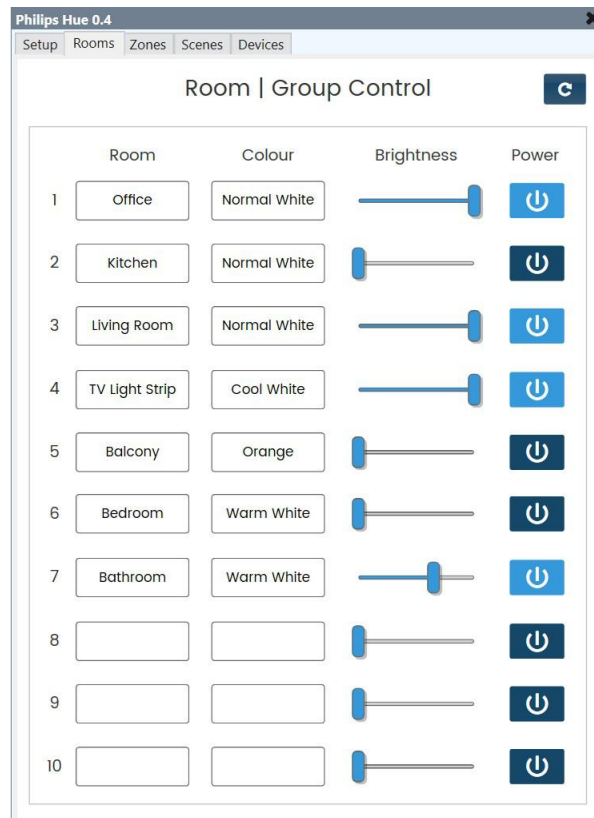
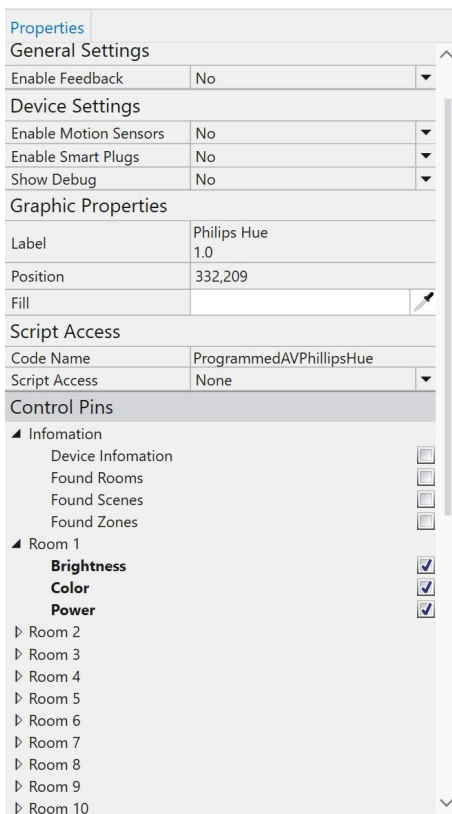
# Refreshing Resources

If you make changes to your Hue system (adding rooms, scenes, etc.)

1. Click the refresh button in the upper-right corner of any control page
2. Wait for the plugin to update with the latest resources
3. New Options will now be available in the dropdown menus

# Configuration Options

- **Enable Feedback:** Enable/disable automatic polling
- **Polling Interval:** Set how frequently the plugin checks for device updates (5-60 seconds)
- **Motion Sensors:** Enable/disable the use of Phillips Hue motion sensors
- **Smart Power Plugs:** Enable/disable the use of Phillips Hue smart plugs
- **Control Pins:** Use the control pins to add additional logic to the plugin.



# Troubleshooting

## Cannot connect to Hue Bridge

- Verify the IP address is correct
- Ensure the Q-SYS Core has network access to the Hue Bridge (use a ping component to ping the IP address of the bridge from the Q-SYS Core)
- Ensure port 443 is not blocked by network rules (This is the default port for the Hue Bridge over https)
- Check that the Hue Bridge is powered and connected to the network

## Authentication fails

- Make sure you press the link button when prompted
- Try restarting the Hue Bridge
- Check if the Bridge has reached its maximum number of users

## Lights don't respond to commands

- Verify rooms and zones are correctly selected
- Ensure the Hue Bridge can communicate with the lights
- Does it work with the Phillips Hue app? (on the same network)

## Resources not appearing in dropdowns

- Click the refresh button to rediscover resources
- Verify that rooms/zones exist in the Hue app

For additional support, please contact [support@programmedAV.com.au](mailto:support@programmedAV.com.au)